



# MONTHLY MEMBERSHIP PROGRESS REPORT

District 3 A

Results as of: 8/31/2016

GMT: HAL GRIFFIN

LOCATION OKLAHOMA

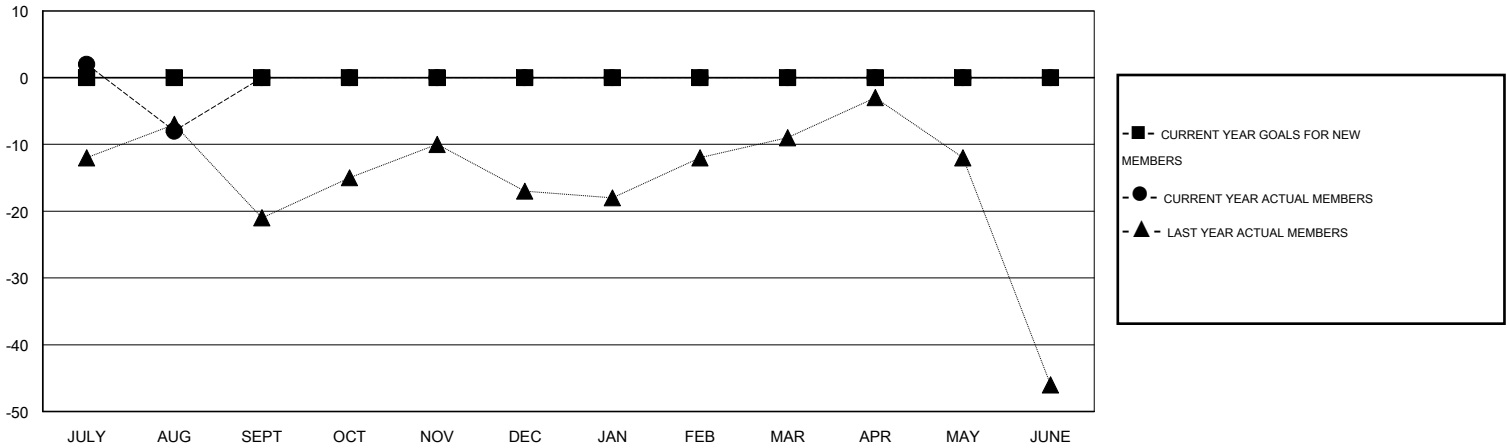
GMT CA 1

| Clubs                 |               |           |               |               | Members               |                 |                               |                 |               |
|-----------------------|---------------|-----------|---------------|---------------|-----------------------|-----------------|-------------------------------|-----------------|---------------|
| RESULTS FOR 2016-2017 |               |           |               |               | RESULTS FOR 2016-2017 |                 |                               |                 |               |
| QUARTER               | NEW CLUB GOAL | NEW CLUBS | DROPPED CLUBS | NET GAIN/LOSS | QUARTER               | NEW MEMBER GOAL | CHARTER AND NEW MEMBERS ADDED | DROPPED MEMBERS | NET GAIN/LOSS |
| JULY/AUG/SEPT         | 0             | 0         | 1             | -1            | JULY/AUG/SEPT         | 0               | 14                            | 22              | -8            |
| OCT/NOV/DEC           | 0             | 0         | 0             | 0             | OCT/NOV/DEC           | 0               | 0                             | 0               | 0             |
| JAN/FEB/MAR           | 0             | 0         | 0             | 0             | JAN/FEB/MAR           | 0               | 0                             | 0               | 0             |
| APR/MAY/JUNE          | 0             | 0         | 0             | 0             | APR/MAY/JUNE          | 0               | 0                             | 0               | 0             |

GOALS AND ACTUAL NEW CLUBS CUMULATIVE



GOALS AND ACTUAL MEMBERS CUMULATIVE



|                        |   |                            |              |
|------------------------|---|----------------------------|--------------|
| DROPPED CLUBS: 1       | 7 CLUBS OF 31 ADDED 1 OR MORE NEW MEMBERS             | <u>GENDER DISTRIBUTION</u> |              |
| <u>DROPPED MEMBERS</u> |   | MALE                       | 672 (78.05%) |
| DECEASED               | <a href="#">CLICK HERE FOR HEALTH ASSESSMENT DATA</a> | FEMALE                     | 189 (21.95%) |
| CLUB CANCELLED         |   | FAMILY UNIT MEMBERS        | 125          |
| OTHER                  |   | HEAD OF HOUSEHOLD          | 59           |
| TOTAL                  |   | NON-HEAD OF HOUSEHOLD      | 66           |